




Cura



BA AURA is a life style statement.
Much above the ordinary, Aura is where
you shall feel at home. Design curated
to suit your style, an Aura home is a
connoisseur's choice.
A select few of these homes will put the
elan back into living.
Come to Aura...come to style.

Available in 3.5 bhk configurations

Aura



Actual Photo



Actual Photos



360° The Roof top Lounge



Putting Green on the roof







101. A.B. SURYAVANSHAM
102. R.R. RAJAKUMAR
103. B.K. MALIK
104. S.V. PAVAR
105. K.S. KULKARNI
106. P.Y. NAVASHIKI
107. J.K. CHATAURVED
108. M.H. PANCHADU
109. D.P. CHAWAKYA
110. R.L. JADHAV
111. K.O. BALKRISHNA
112. T.U. UTEKAR
113. S.L. DHAVAN
114. R.T. KANITKAR
115. H.R. KOTHARI
116. C.J. RATHOD
117. S.K. NANEYAR

101 102 103
104 105 106
107 108 109
110 111 112
113 114
115 116 117

Entrance Lobby

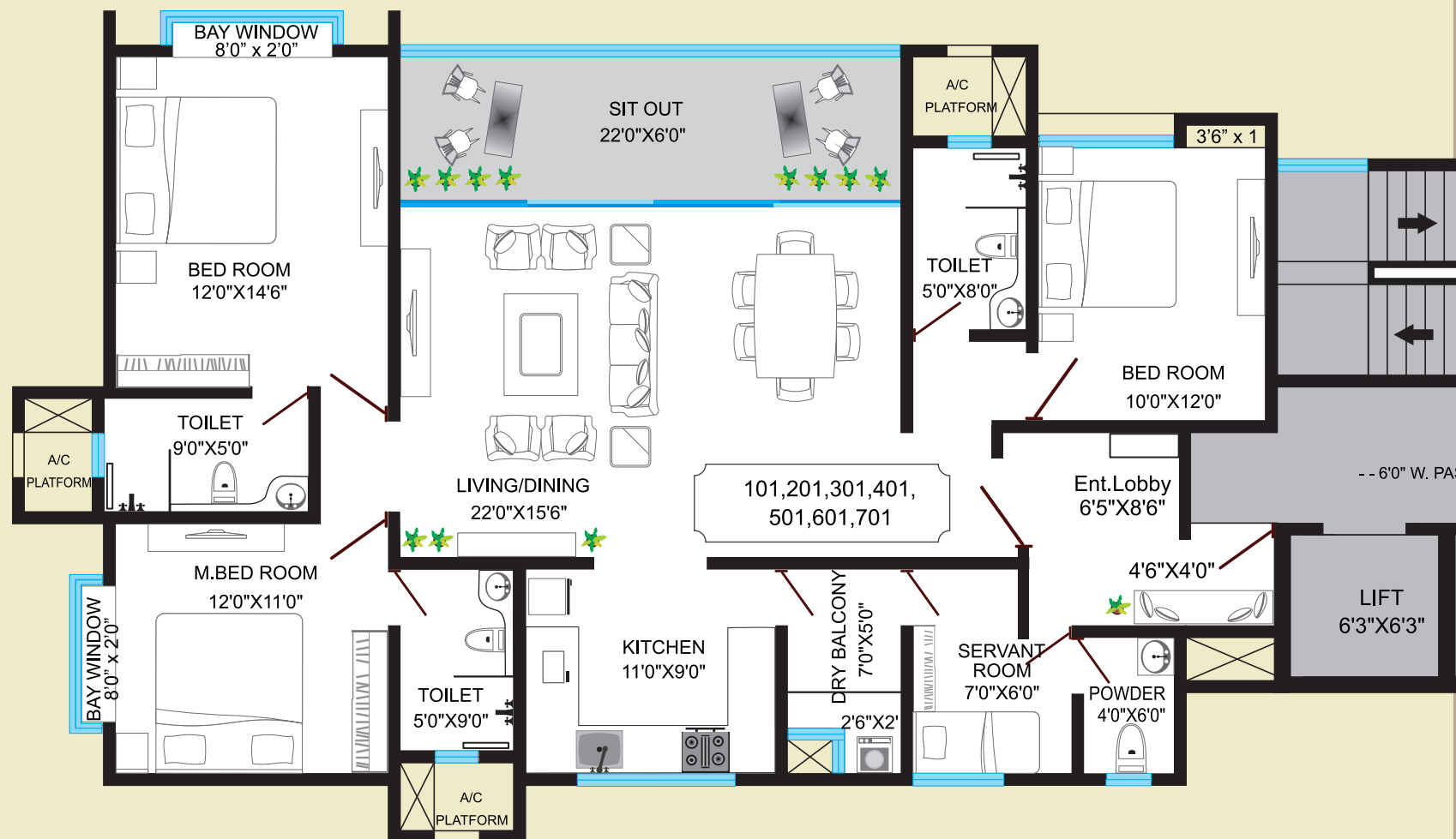


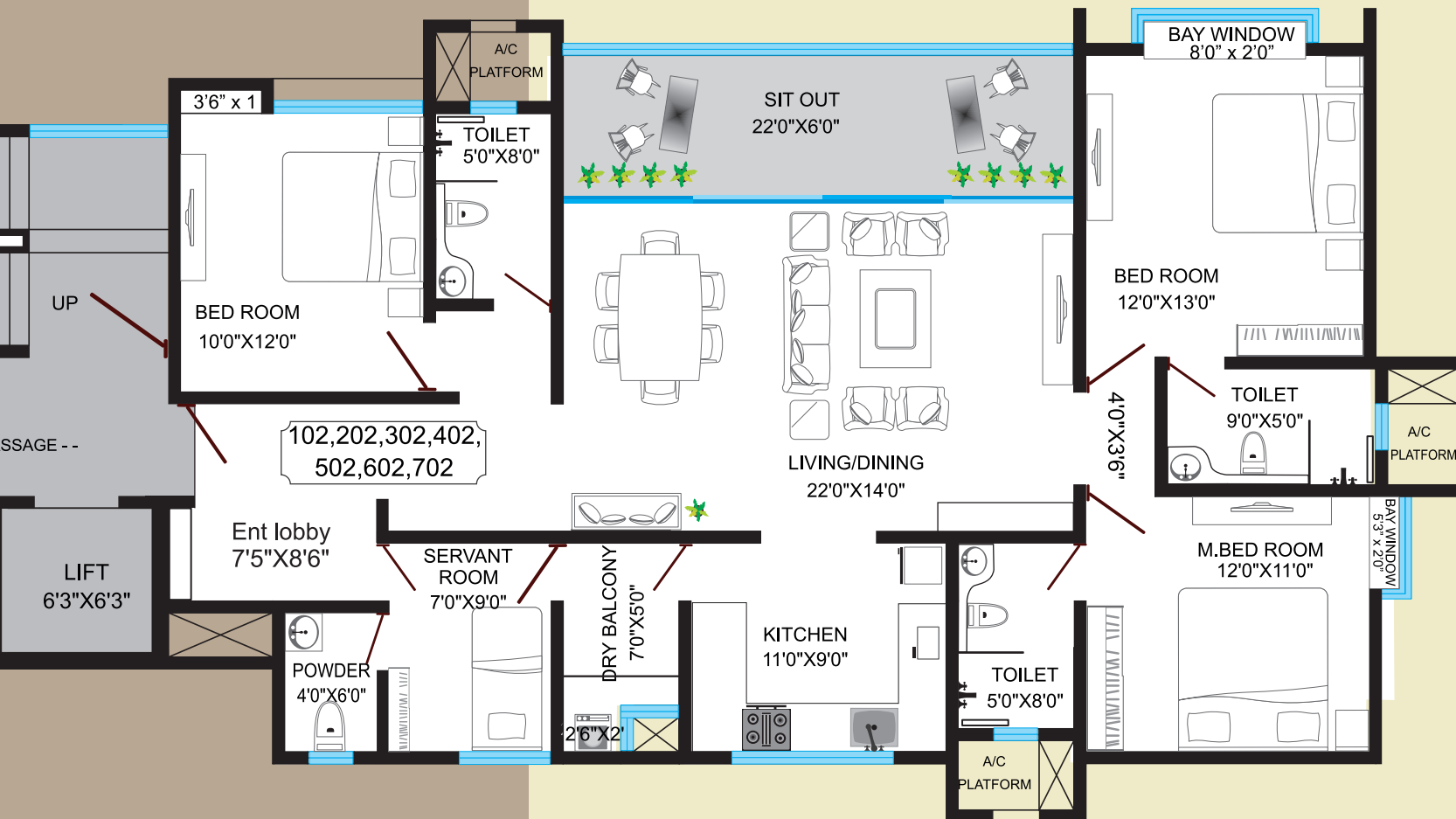


Actual Photo



3.5 Bhk
Flat no 1
(Floors 1 - 7)
1433.00 Carpet Area
1935.00 Saleable Area





C-WING

3.5 Bhk

Flat no 2
(Floors 1 - 7)

1393.00 Carpet Area

1881.00 Saleable Area



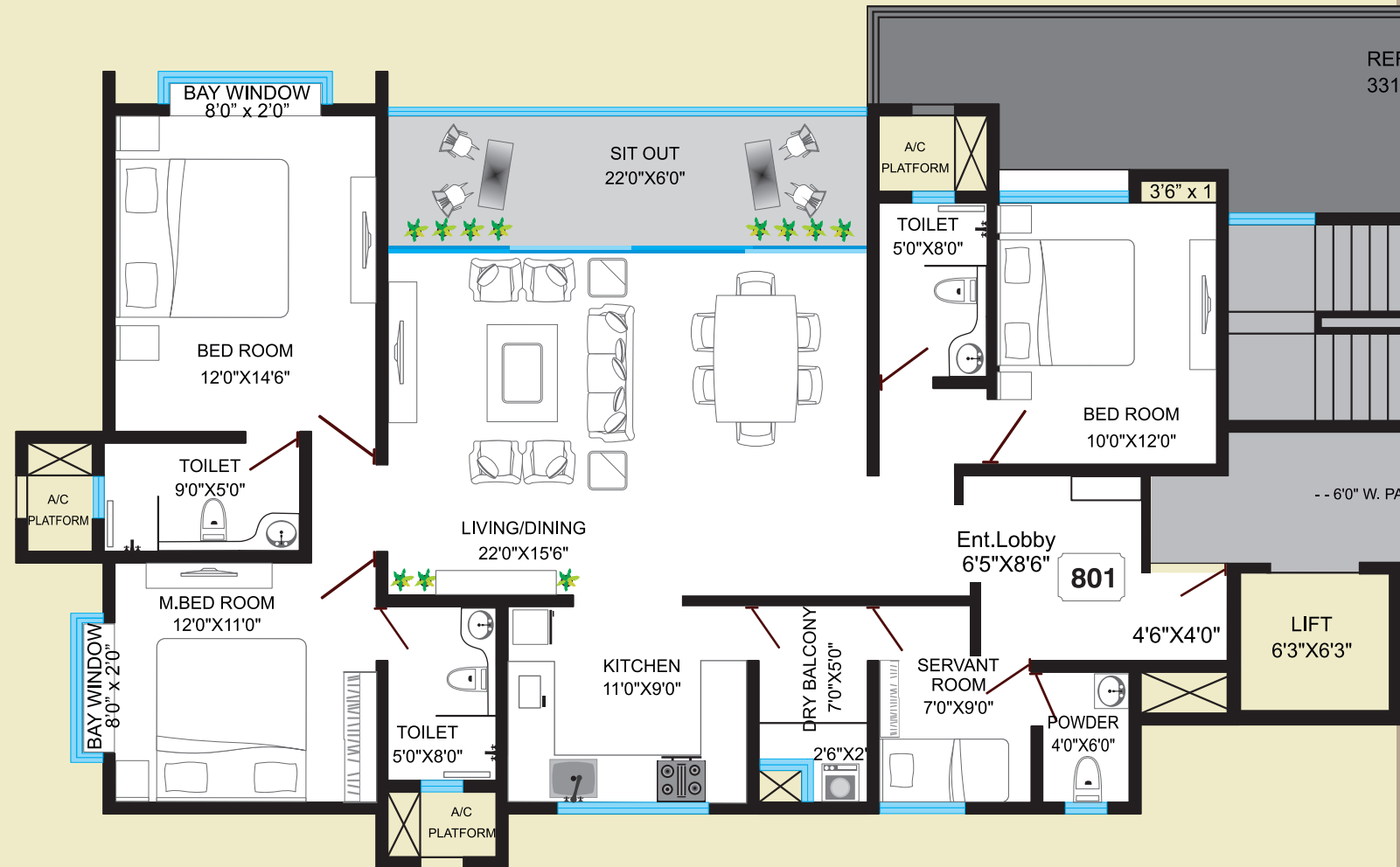
Lura

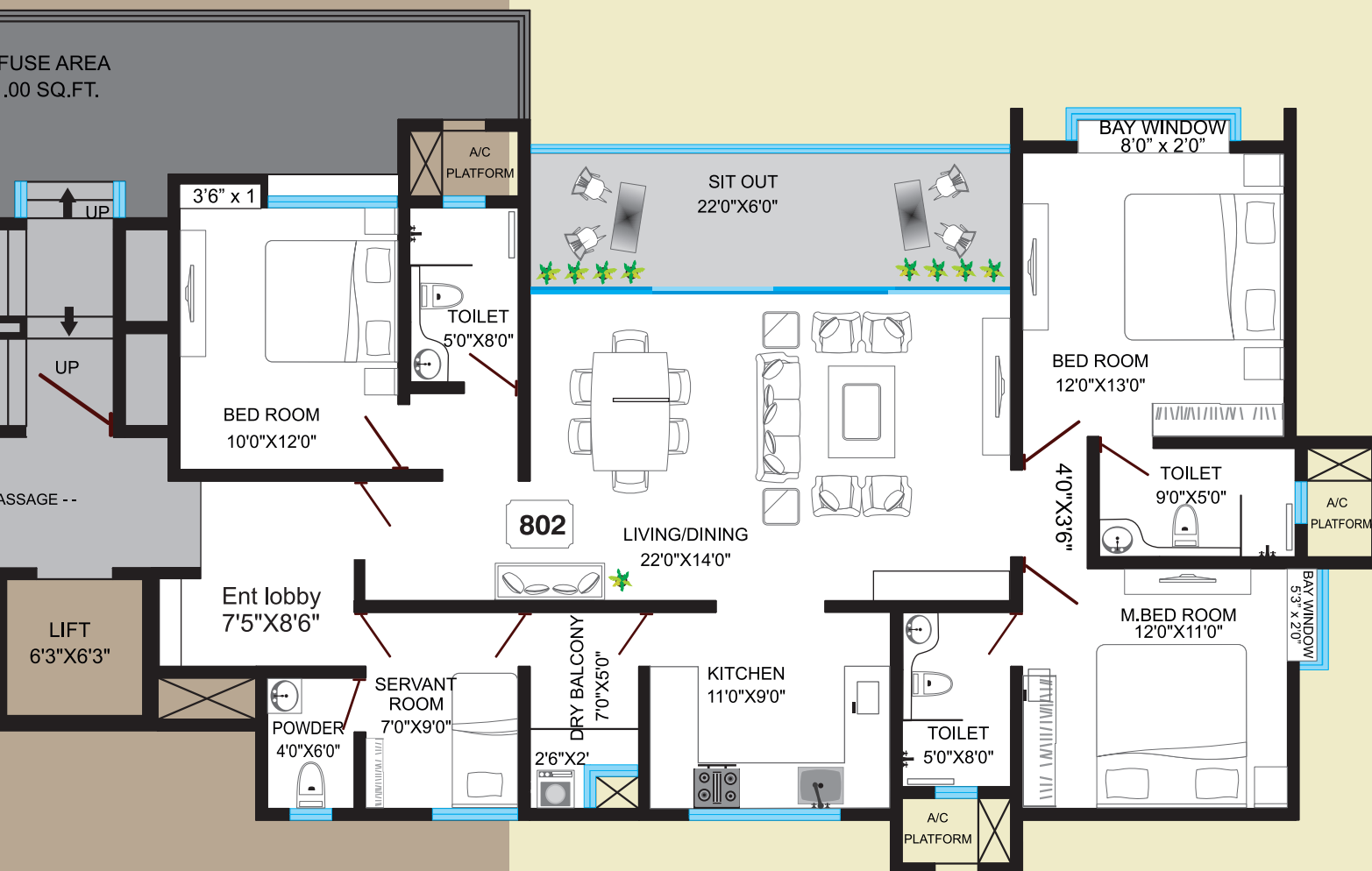
3.5 Bhk

Flat no 1
(Floor 8)

1433.00 Carpet Area

1935.00 Saleable Area





C-WING

3.5 Bhk

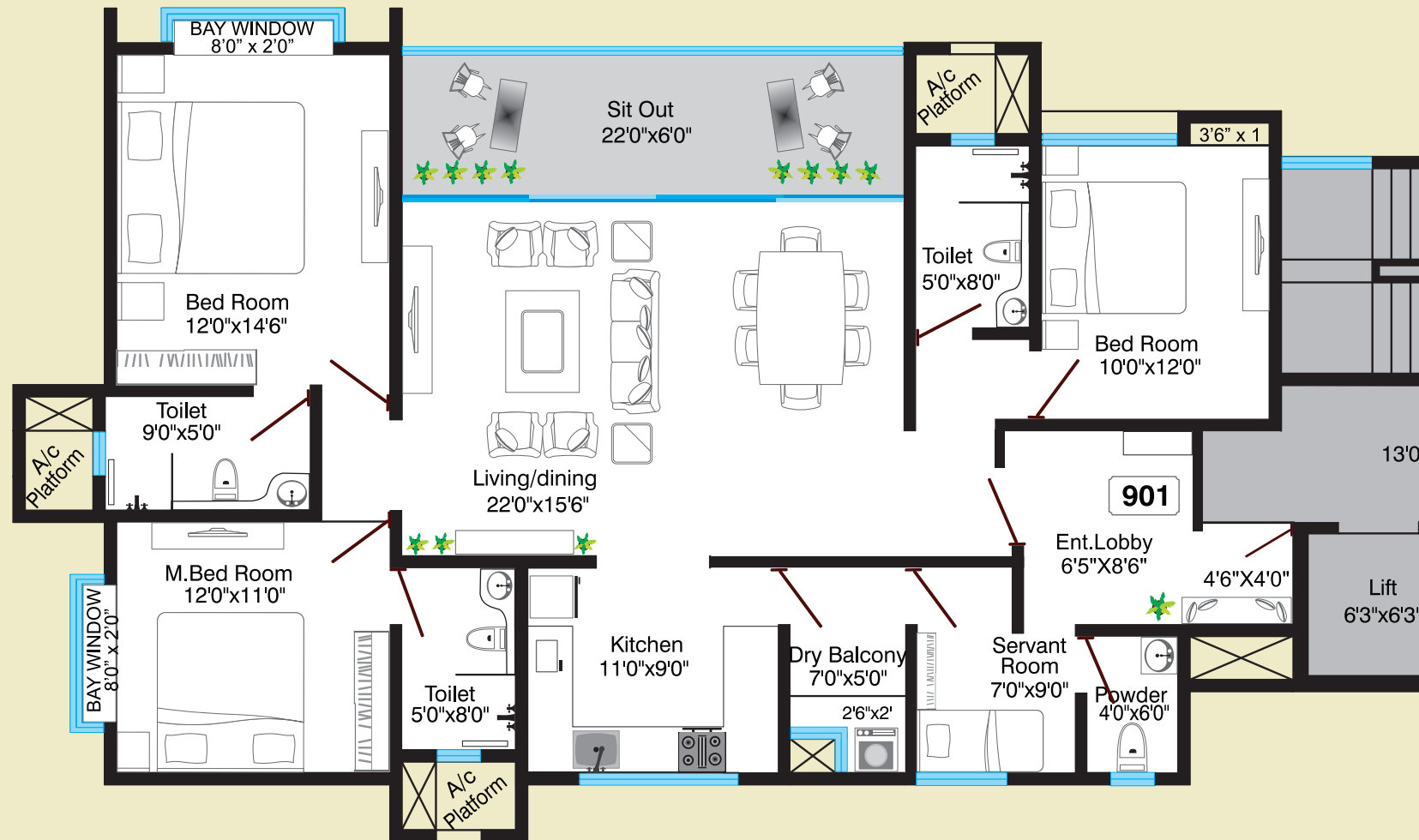
Flat no 2
(Floor 8)

1393.00 Carpet Area

1881.00 Saleable Area



3.5Bhk
Flat no 1
(Floor 9)
1433.00 Carpet Area
1935.00 Saleable Area





C-WING

360°

The Roof top
Lounge

An Exclusively Designed
Amenity Space for the
resident of AURA.

Aura



Amenities

- Swimming Pool
- Cardio Room
- Gymnasium - AC
- Grand Entrance gate
- Rain water Harvesting
- Sewage Treatment Plant
- Water Treatment plant
- Multi level security
- Society Admin Office
- Quality tested material with test reports
- Maximum light and Ventilation
- Heat resistant treatment on top terrace



Electrification

- Concealed copper wiring with circuit breakers.
- TV & Telephone points in living & all bedrooms.
- Quality modular switches - Schneider or equivalent make.
- Adequate electrical points for electrical appliances.
- Shuttered plug socket to avoid accidental contact.
- Provision for Inverter Backup.
- Split A/C provision in all bedrooms & living.
- 3-Phase connection for all flats.
- 2-way Light Switches in bedrooms with attached bathrooms.
- Concealed Foot Lamps in bedrooms with attached bathrooms..
- Earth leakage Circuit Breakers.
- Exhaust Fans in bathrooms.

Automation & Security

- Color Video Door Phone.
- Gas Leak Detector.

Entertainment

- Multi Purpose Hall.
- Children's Play Area.

Health & Fitness

- Swimming Pool.
- State of-the-art Air-Conditioned Gymnasium.

Others

- Fire fighting equipment.
- Internal Concrete / Paved roads.
- 100 % DG backup for complete Common Load .
- Premium Automatic Elevators.
- Cross ventilation in Living & Dining.
- Designer Ambience.
- Entrance Lobby Gated.
- CCTV Surveillance.

Main reception (Ground floor)

- Marble Flooring & Wall cladding
- Decorative Ceiling.

Facade & Decorative canopy

- External Glazing for Staircase.
- Decorative Canopy for Main Entrance.

RCC

- Earthquake resistant as per seismic design.
- Brick work & Plaster.
- Siporex/ Ecolite ACC Blocks.
- External-Double Sand Faced Finish.
- Internal walls with smooth gypsum/pop finish of Saint Gobain/Buildon.

Paint

- External-Superior crack resistant, Weather Proof Paint.
- Internal Jotun or Equivalent Premium Emulsion Paint.

Plumbing

- UPVC /CPVC Astral or equivalent make pipes and fittings.
- Grohe/Equivalent range single lever fixtures.

Kitchen

- Quartz -Top kitchen platform.
- Imported PP boards .
- Gas leak detector system.
- Reticulated piped gas system.
- Stylish modular kitchen with hob (Faber or Equivalent).

Kitchen

- Scratch free S.S.Sink
(Nirali / Franke or equivalent).
- Utility space with facility for washing machine.

Terraces

- SS railing with glass.
- Private Sit-out to living & dining on each floor.
- Wooden finish ceiling with light fittings to each sit-out.

Bathrooms

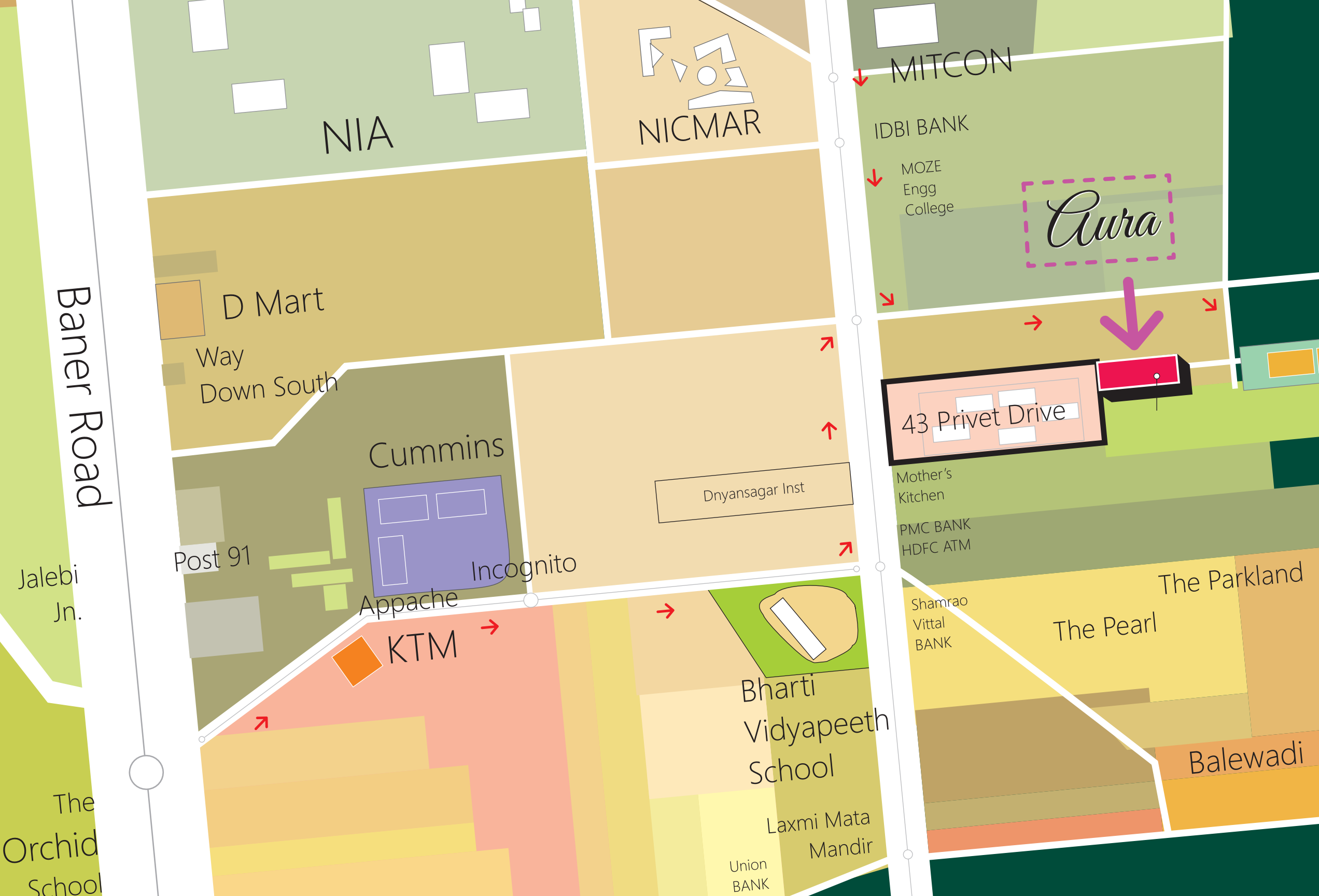
- Exclusive bathrooms with designer premium sanitary ware (Roca or equivalent).
- Shower partition in attached bathrooms .
- Imported PP boards.
- Concealed plumbing.
- Mirrors for all bathrooms.
- Wall hung premium EWC with Soft closing lid
- Concealed dual flush valves.
- False ceiling with grid panels.
- Grohe or equivalent chromium plated fittings.
- Light fitting concealed.
- Hot & cold mixer in wash basin for master & children bedroom

Doors / Windows

- Designer Laminate finish wooden main door.
- Digital main door lock (Samsung, Yale or equivalent).
- Internal laminated flush doors with premium fixtures.
- Heavy duty powder coated aluminum glazed windows and ventilators made from specially designed manufactured sections.
- Granite frame for windows.
- Hafele door fixtures.

Flooring

- Vitrified Tiles- 800X800 (RAK or Equivalent).
- Anti-skid tiles in bathrooms & sit outs.
- Dado tiles in dry balcony up to 4' height.
- Wooden finish ceramic tiles in sit outs.
- Imported PP boards.
- Laminated wooden flooring in Master bedroom.



NIA

NICMAR

MITCON

IDBI BANK

MOZE
Engg
College

Aura

D Mart

Way
Down South

Cummins

Dnyansagar Inst

43 Privet Drive

Mother's
Kitchen

PMC BANK
HDFC ATM

Post 91

Incognito

Apache

KTM

Bharti
Vidyapeeth
School

Laxmi Mata
Mandir

Union
BANK

Shamrao
Vittal
BANK

The Pearl

The Parkland

Balewadi

Baner Road

Jalebi
Jn.

The
Orchid
School



Balewadi, where Aura is located is fast developing into Pune's top urban destinations. Open green spaces, Office Complexes, Top Institutes, the World Class Sports Complex, the best residential developments, Mega Departmental Stores, the best Dining spots, Lounges, Fast Food joints, Street food and Entertainment spots, Medical Centers, Schools, Daily Markets and the next door proximity to Hinjewadi - all these come together to make Baner Balewadi a true residential paradise. AURA is now located to exploit these features of the surroundings to the fullest.





ON GOING PROJECTS

43 Privet Drive
Elite Homes, Baner Balewadi

 **B.A. HUB**
RETAIL SPACES - WAGHOLI, PUNE


Phase II **Greenfield**
The Smart Choice
2bhk homes, Hadapsar

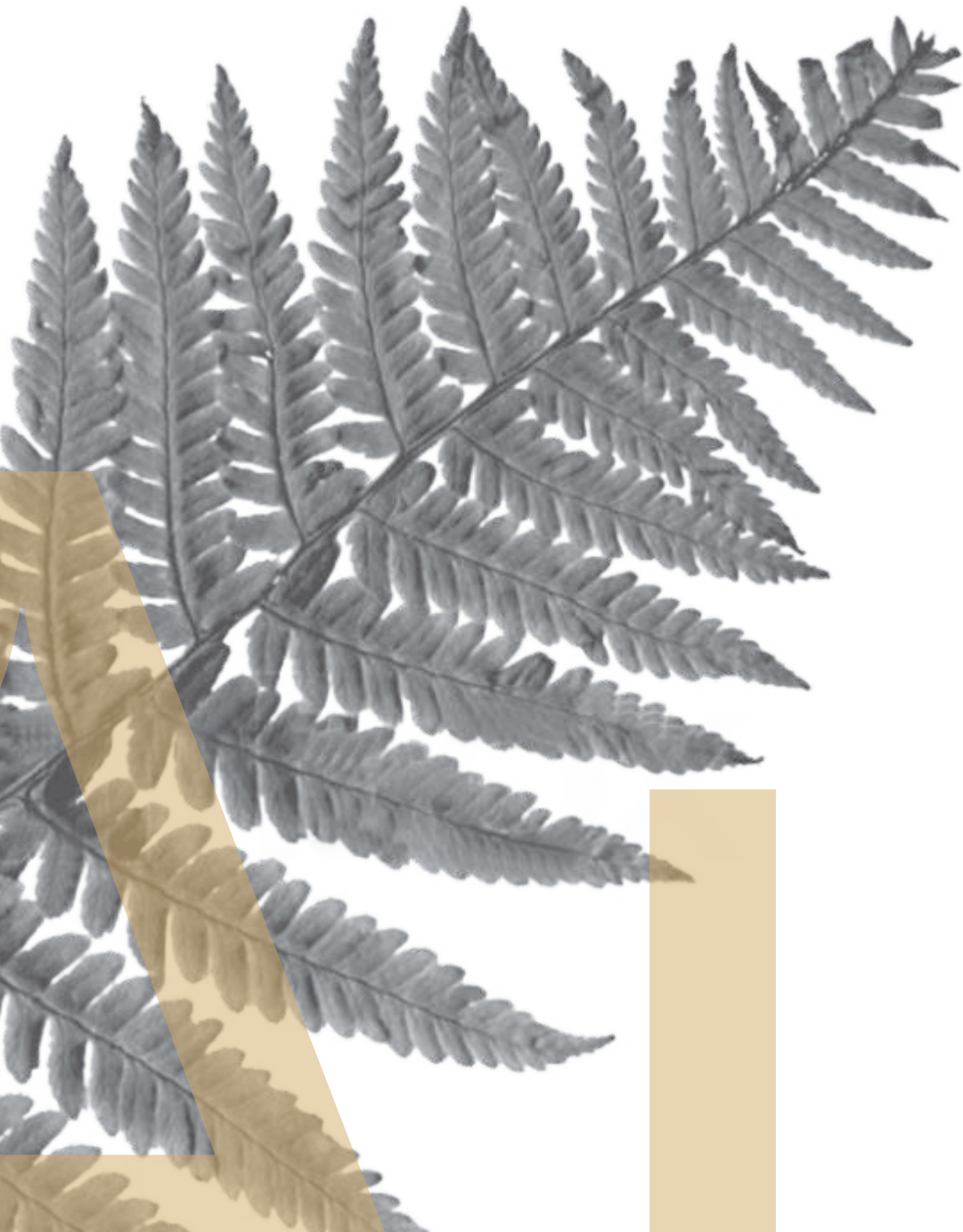

B.A. Vermont
A FULL LIFE
2bhk homes, Wagholi

swaraj
Experience Freedom
Moshi
1 & 2 bhk homes


Plumeria Drive
TATHAWADE
2 & 3 bhk homes

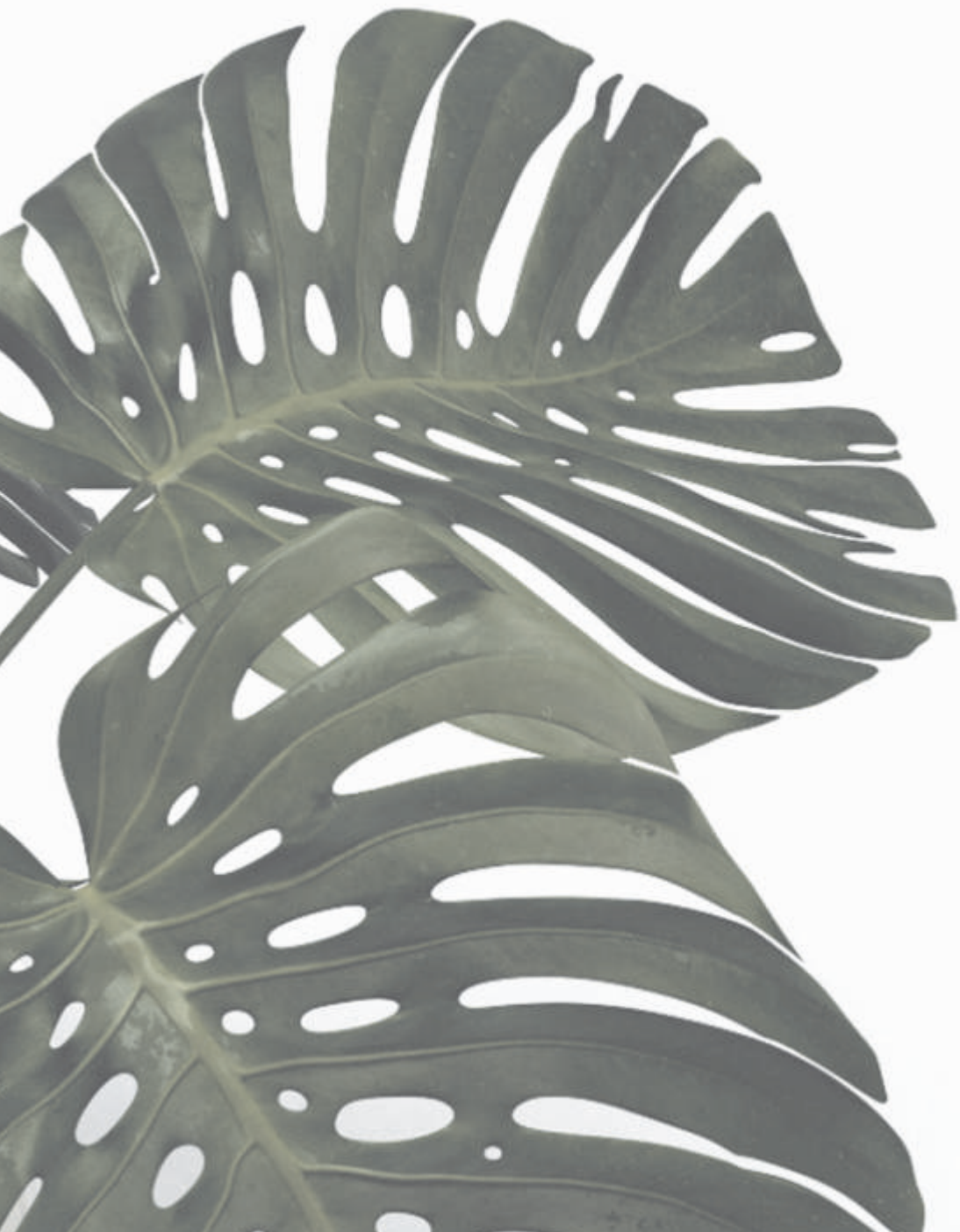
SWARAJ 
capital
FOR THE SMART CITIZEN
M O S H I
Shops & Offices

neá
pure homes
Sus Road
1 & 2 bhk homes
Phase 2



Aura

Site:
Opp Bharti Vidyapeeth School,
Near MITCON, Balewadi, Pune - 28
Tel +91-7304223377, 7350502121
aura@bhandariassociates.co.in



Bhandari[®]
associates

celebration of space

ISO 9001:2008 certified

H.O.

1620, Near Sakal Nagar,

Baner Road, Aundh, Pune - 411 007

Tel +91 20 66483939

sales@bhandariassociates.co.in

www.bhandariassociates.co.in

