

 **Bhandari**  
associates<sup>®</sup>  
celebration of space  
ISO 9001:2015 certified  
[www.bhandariassociates.co.in](http://www.bhandariassociates.co.in)  
The makers of Swaraj, Moshi

# SWAदेश

B.A.  
**SWAदेश**  
my kingdom!  
2 b h k - M O S H I

Gat No.231, Borhadewadi,  
Near Swaraj, Behind D'mart  
Moshi, Pune 412105

[sales@bhandariassociates.co.in](mailto:sales@bhandariassociates.co.in)  
[www.bhandariassociates.co.in](http://www.bhandariassociates.co.in)

Tel  
**6366 937 437**



MahaRERA Registration No. P52100024275  
<https://maharera.mahaonline.gov.in>

**2 b h k - M O S H I**

# પરજ્ઞા

## Get Ready!

Prepare yourself for a great tomorrow.

A tomorrow that will bring out the best in you and your loved ones.

A tomorrow that promises a bright future, of a loving life filled with growth & progress.

Prepare yourself to take control. Get ready to rule.

**Get ready for your Swadesha. Your Kingdom!**

B.A.  
**SWAદેશ**

my kingdom!

2 b h k - M O S H I



**B.A.**  
**SWAदेश**

my kingdom!

Launching Wings E, F & G

**BA Swadesha** is being developed by **Bhandari Associates**, the developers of the iconic **Swaraj**. Like **Swaraj** the planners have designed a project that will deliver a fulfilling lifestyle, at **BA Swadesha**. From perfectly planned homes to a total community dwelling in all, **BA Swadesha** ticks all the boxes. Packed with amenities, the resident will have access to all the amenities necessary for an ideal lifestyle. A linear layout provides total privacy and the packed clubhouse complex next to the river bed is the perfect place to relax at. Also it provides superior safety to the children. Located in the most developed and cosmopolitan part of **Moshi**, **BA Swadesha** is located right at the centre. **BA Swadesha** is truly set to be **'Your Kingdom'**



VIEW OF THE DRIVEWAY



EVENING VIEW OF THE CLUBHOUSE COMPLEX

VIEW FROM THE CLUBHOUSE SHOWING THE LAWNS AND THE CHILDREN'S PLAY PIT



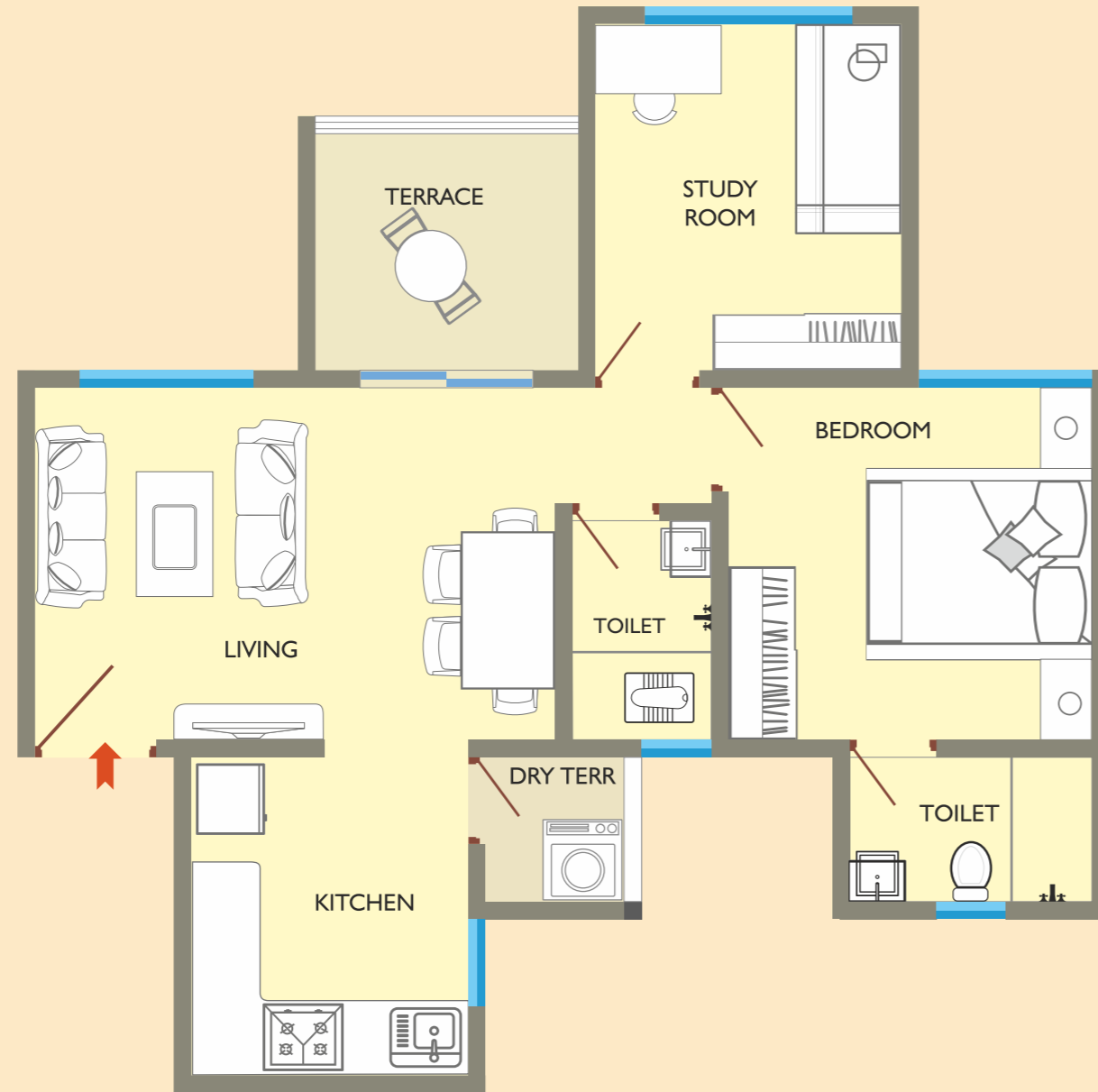
VIEW OF CHILDREN'S PLAY PIT

Located towards the riverside, the Club house is a play and relax zone. Green Lawns, shaded niches, play areas, a children swimming pool, flowering gardens, peaceful gazebos create a paradise like ambience. The clubhouse with multipurpose hall, modern GYM and indoor games helps the resident follow an active lifestyle. Children and the young at heart will find this area very inviting & are guaranteed to spend maximum time here.

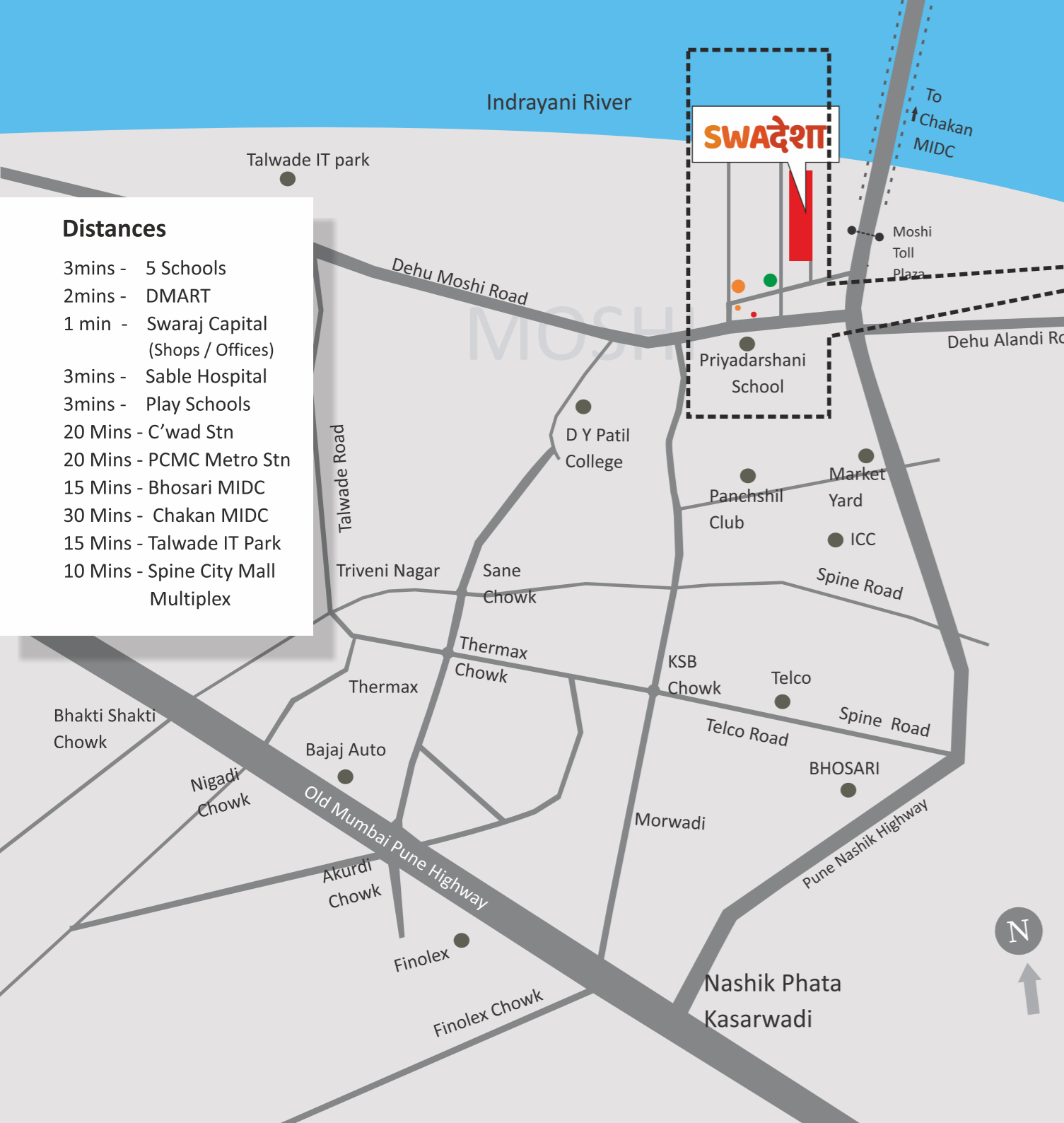
## Typical flat layout

Total Area:	<b>555 sq.ft.</b>
Living:	14'9" X 10'0"
Terrace:	7'6" X 6'9"
Kitchen:	8'0" X 9'0"
Dry Terrace:	4'0" X 4'0"
Study Room:	8'9" X 10'0"
Bedroom:	10'3" X 10'0"
Attached Toilet:	7'0" X 4'0"
Common Toilet:	4'0" X 6'3"
<i>(All dimensions in feet)</i>	

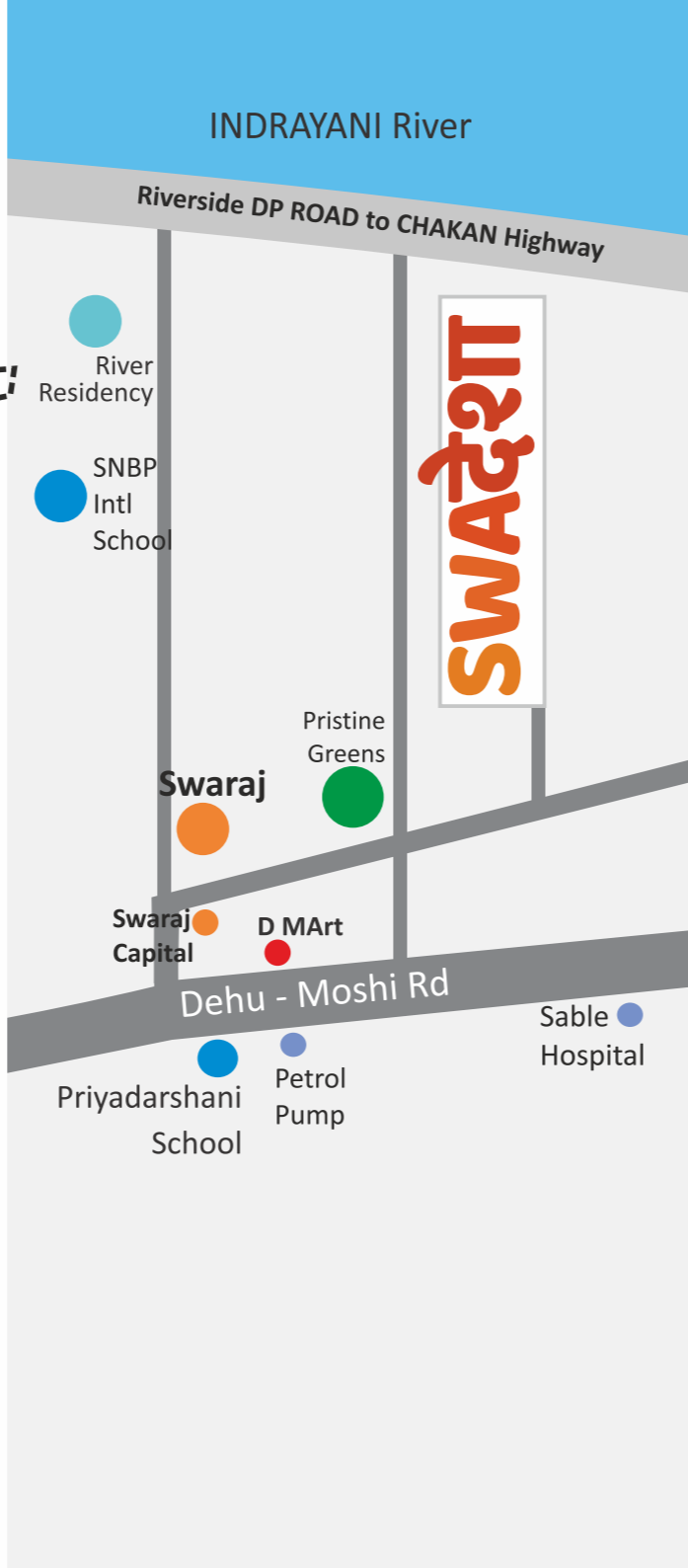
The BA Swadesha home is planned to provide an un-compromised lifestyle to the resident. Perfect in all respects, these are airy and well lit homes. The specifications are the best and the finish will make the home owner truly proud.



EVENING OVERVIEW OF CLUBHOUSE COMPLEX



- Distances**
- 3mins - 5 Schools
  - 2mins - DMART
  - 1 min - Swaraj Capital (Shops / Offices)
  - 3mins - Sable Hospital
  - 3mins - Play Schools
  - 20 Mins - C'wad Stn
  - 20 Mins - PCMC Metro Stn
  - 15 Mins - Bhosari MIDC
  - 30 Mins - Chakan MIDC
  - 15 Mins - Talwade IT Park
  - 10 Mins - Spine City Mall Multiplex

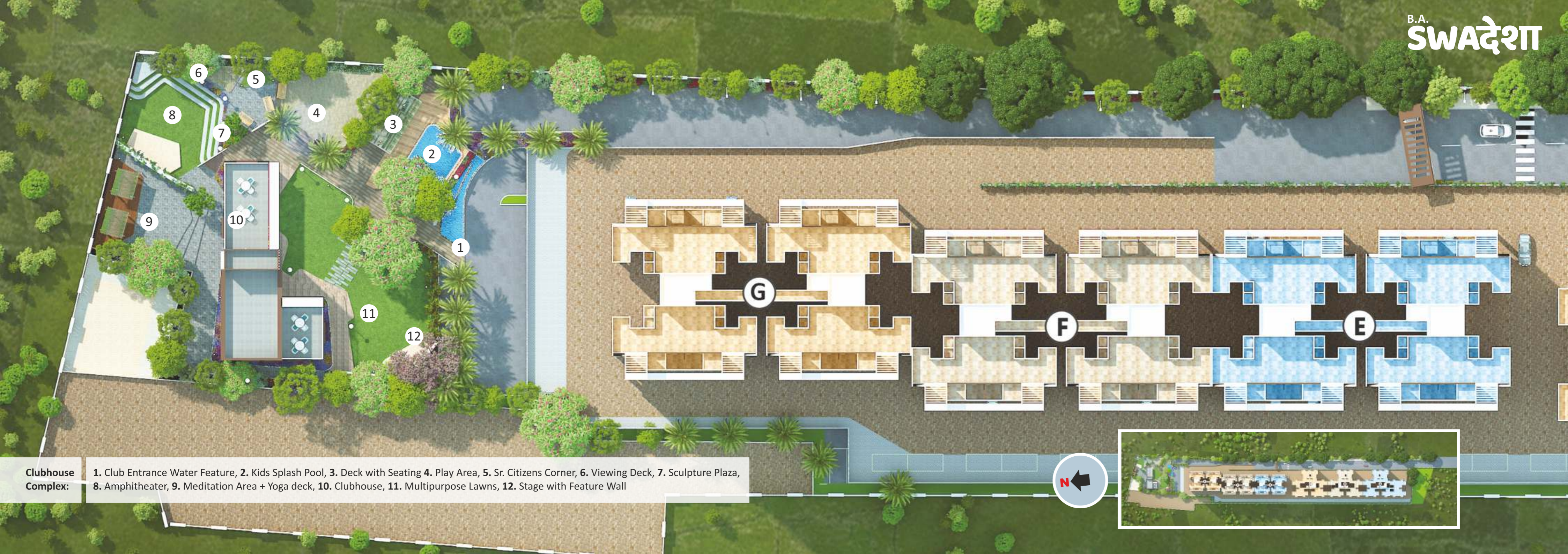


# SPECIFICATIONS

- STRUCTURE**
- Earthquake resistant RCC Structure
  - 4" Brickwork for internal walls & 5" for external walls
  - Gypsum finished plaster internally & double coat sand faced externally
- PAINTING**
- Interior walls & ceiling finished with OBD paint
  - Exterior walls finished with weather shield paint
- FLOORING**
- 2 x 2 ft Vitrified tiles for complete apartment
  - 1 x 1 ft Anti-skid ceramic tiles in bathrooms
  - 1 x 1 ft Anti-skid ceramic tiles in terrace and utility area
- BATHROOM**
- Branded sanitary fittings from Johnson / Essco Cera or equivalent
  - Branded CP fittings from Jaquar / Cera Johnson or equivalent
  - Provision for exhaust fan
  - Solar heated water in master bathroom
  - Provision for geysers
  - Concealed dual flush systems
  - Granite / Marble door frames
- KITCHEN**
- Black Granite platform with stainless steel sink of Futura or equivalent
  - Electrical points for kitchen appliances
  - Provision for exhaust fan
  - Provision for water purifier
- BEDROOM**
- Provision for AC in Master Bedroom
  - Provision for inverter near bedroom passage
- DOOR**
- Main Door - Wooden flush door with laminate
  - Bedroom Doors - Flush door with laminate
  - Toilet Doors - Flush door with laminate
  - Door fittings of Dorset / Europa or equivalent
- WINDOWS**
- Power-coated Aluminum windows with mosquito net
  - Marble / Granite sill
- ELECTRICALS**
- Electrical points - Modular switches and sockets from Anchor / Roma or equivalent
  - Single phase connection to each apartment
  - Provision for TV and Telephone point in living room
- PLUMBING**
- Concealed UPVC & CPVC
  - Washing machine provision
- RAILING**
- MS Railing with synthetic Enamel paint
  - Safety Grills for all windows
- OTHER FACILITIES**
- CCTV at entrance gate and building entrance lobby
  - Generator backup for designated common load
  - Intercom provision in each apartment
  - Concrete / Paved roads
  - Sewage Treatment Plant with recycling for flushing
  - Organic Waste Converter
  - Rain Water Harvesting
  - Online Water Treatment Plant

The brochure is purely conceptual and not a legal offering, nor will it be a part of the agreement. Number of Buildings, Floors and No. of flats/units may be revised. Promoters reserve the right to amend the layout, plans, elevations, design, specifications, amenities etc. without notice. Layouts and views are artistic impression on completion of all phases of the said project.





**Clubhouse Complex:** 1. Club Entrance Water Feature, 2. Kids Splash Pool, 3. Deck with Seating 4. Play Area, 5. Sr. Citizens Corner, 6. Viewing Deck, 7. Sculpture Plaza, 8. Amphitheater, 9. Meditation Area + Yoga deck, 10. Clubhouse, 11. Multipurpose Lawns, 12. Stage with Feature Wall

